

# NWT Labour Force Activity

December 2015

## OVERVIEW

In December 2015, Statistics Canada estimates that 21,700 persons were employed in the Northwest Territories. This represents an employment rate of 67.8% and was the second highest in Canada behind the Yukon. Nationally, Canada's employment rate was 61.2%.

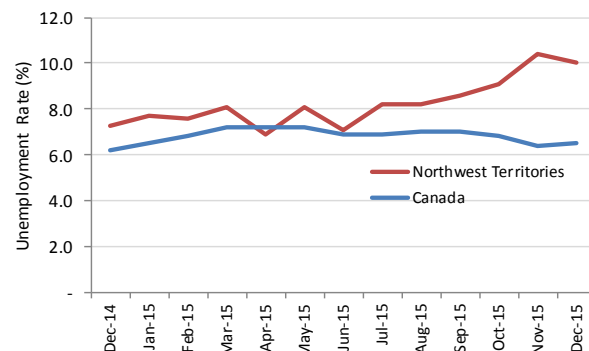
In the NWT, employment rose for the first time in five months, with the number of employed persons increasing by 200 between November and December. The unemployment rate also changed direction for the first time in five months, dropping from 10.4% to 10.0%.

Table 1: Labour Force Statistics - Northwest Territories

	Dec 2015	Nov 2015	Dec 2014	Change from Dec 2014 – Dec 2015	
				Number	%
Population 15+	32,000	31,900	32,300	(300)	-0.9
Labour force	24,100	24,000	23,300	800	3.4
Employment	21,700	21,500	21,600	100	0.5
Full-time	18,600	18,700	19,400	(800)	-4.1
Part-time	3,000	2,700	2,200	800	36.4
Unemployment	2,400	2,500	1,700	700	41.2
Participation rate (%)	75.3	75.2	72.1		
Unemployment rate (%)	10.0	10.4	7.3		
Employment rate (%)	67.8	67.4	66.9		

The NWT unemployment rate increased during the second half of 2015. There were 700 more people unemployed in the NWT in December 2015 compared to December 2014. Despite this increase in the number of unemployed people, year-over-year employment was relatively stable.

Figure 1: Unemployment rates during past 12 months, Northwest Territories & Canada



## EMPLOYMENT BY TYPE OF WORKER, CLASS OF WORKER & INDUSTRY

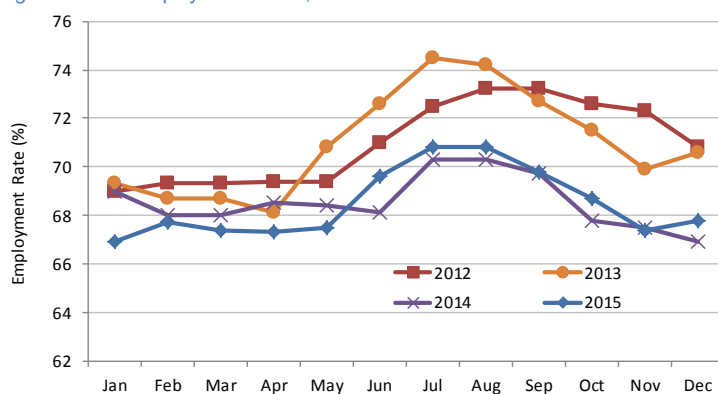
On a year-over-year basis, there has been a shift away from full time employment into part-time employment. Similarly, gains in private and public sector employment were offset by a decline in self-employment. In December 2015, there were 200 fewer people working in the service producing industry, while employment increased by 300 people in the goods producing industry.

Figure 2: Changes in the number of employed persons from previous year



## HISTORICAL EMPLOYMENT RATES

Figure 3 NWT Employment Rates, 2012 - 2015



Monthly employment rates over the year typically follow a seasonal pattern of higher employment in the summer and lower employment in the winter. While the monthly pattern for 2015 was similar to 2014, overall employment rates were lower than they were a few years ago.

## HISTORICAL LABOUR FORCE ACTIVITY

Table 2: Labour Force Activity -Northwest Territories

	Population 15 & Over	Labour Force	Employed	Unem- ployed	Not in the Labour Force	Partic- ipation Rate	Unemp- loyment Rate	Employ- ment Rate
Dec-15	32,000	24,100	21,700	2,400	7,900	75.3	10.0	67.8
Nov-15	31,900	24,000	21,500	2,500	8,000	75.2	10.4	67.4
Oct-15	31,900	24,100	21,900	2,200	7,700	75.5	9.1	68.7
Sep-15	31,800	24,300	22,200	2,100	7,500	76.4	8.6	69.8
Aug-15	31,800	24,500	22,500	2,000	7,300	77.0	8.2	70.8
Jul-15	31,800	24,500	22,500	2,000	7,300	77.0	8.2	70.8
Jun-15	31,900	23,800	22,200	1,700	8,000	74.6	7.1	69.6
May-15	32,000	23,500	21,600	1,900	8,500	73.4	8.1	67.5
Apr-15	32,100	23,200	21,600	1,600	8,800	72.3	6.9	67.3
Mar-15	32,200	23,600	21,700	1,900	8,500	73.3	8.1	67.4
Feb-15	32,200	23,600	21,800	1,800	8,600	73.3	7.6	67.7
Jan-15	32,300	23,400	21,600	1,800	8,900	72.4	7.7	66.9
Previous Years:								
Dec-14	32,300	23,300	21,600	1,700	9,000	72.1	7.3	66.9
Dec-13	32,600	25,000	23,000	2,000	7,600	76.7	8.0	70.6
Dec-12	32,500	24,900	23,000	1,800	7,700	76.6	7.2	70.8
Dec-11	32,300	24,300	22,400	1,900	8,000	75.2	7.8	69.3
Dec-10	32,100	23,600	21,800	1,800	8,500	73.5	7.6	67.9
Dec-09	31,700	21,800	20,500	1,300	9,900	68.8	6.0	64.7
Dec-08	31,700	23,200	22,000	1,200	8,500	73.2	5.2	69.4
Dec-07	31,700	24,000	22,600	1,400	7,700	75.7	5.8	71.3
Dec-06	31,300	24,200	22,700	1,500	7,100	77.3	6.2	72.5
Dec-05	31,200	23,600	22,400	1,200	7,700	75.6	5.1	71.8

Information on the territorial labour market is a result of the extension of Statistics Canada's national labour force survey (LFS) to the Northwest Territories. Data presented for the Northwest Territories is based on three-month moving averages, with survey counts rounded to the nearest 100 persons.

For additional information on the monthly release of labour force survey results for the Northwest Territories, visit the NWT Bureau of Statistics website at <http://www.statsnwt.ca/> or call 1-888-782-8768 (1-888-STATSNT).

Next Release: February 5, 2016