

August 7, 2015

NWT Labour Force Activity - July 2015 -

In July 2015, Statistics Canada estimates that 22,500 persons were employed in the Northwest Territories, representing an employment rate of 70.8%. The July employment rate was the highest in Canada, followed by Yukon (69.5%) and Alberta (69.5%). Nationally, Canada's employment rate was 62.3%.

The NWT employment rate rose for the third consecutive month, reflecting the seasonal peak experienced in previous years (Figure 1). Despite this increase, the July employment rate was the second lowest recorded for the month since 2011.

The July unemployment rate increased to 8.2%, from 7.1% reported the previous month, but was lower than July 2014.

**Table 1 Monthly Highlights
Northwest Territories, July 2015**

	Jul-15	Jun-15	Jul-14
Population	31,800	31,900	32,300
Labour Force	24,500	23,800	24,900
Employed	22,500	22,200	22,700
Unemployed	2,000	1,700	2,200
Not in Labour Force	7,300	8,000	7,400
Participation (%)	77.0	74.6	77.1
Employment (%)	70.8	69.6	70.3
Unemployment (%)	8.2	7.1	8.8

**Figure 1 Employment Rates
Northwest Territories, 2011 - 2015**

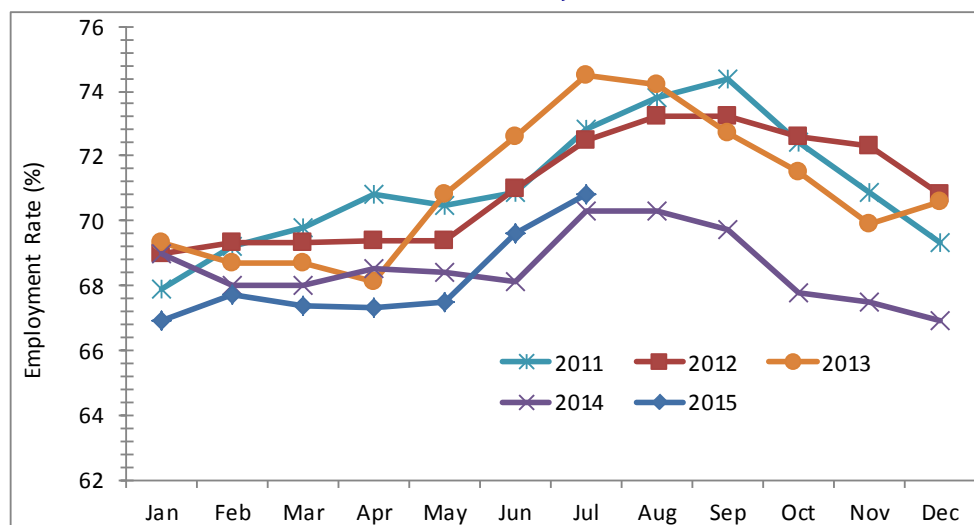


Table 2 shows the number of employed persons and the employment rate by key characteristics for the past three months. Between May and July 2015, the number of employed person increased by 900 persons. Notable increases were among those aged 15 – 24 years, males and Aboriginal persons. Except for females, the July 2015 employment rate increased for all key demographic categories compared to the previous month.

Table 2 *Employment Rates by Key Characteristics
Northwest Territories*

	Jul-15		Jun-15		May-15	
	Employed (Persons)	Employment Rate (%)	Employed (Persons)	Employment Rate (%)	Employed (Persons)	Employment Rate (%)
Northwest Territories	22,500	70.8	22,200	69.6	21,600	67.5
15-24 Yrs.	3,200	53.3	2,800	46.7	2,500	41.7
25 Yrs. & Over	19,300	74.8	19,300	74.5	19,100	73.7
Males	11,600	73.0	11,100	69.8	10,600	66.3
Females	10,900	68.6	11,000	69.2	10,900	68.1
Aboriginal	8,600	57.3	8,500	56.7	7,900	52.7
Non-Aboriginal	13,900	82.2	13,700	81.1	13,600	80.0
Yellowknife	12,500	81.7	12,300	80.9	12,200	79.7
Other	10,000	60.6	9,800	58.7	9,400	56.3

Table 3 shows changes in the number of employed persons from the previous month by key characteristics. Full-time work increased by 400 in July, while part-time work declined by 100 over the same period. In July, private sector employment increased, public sector employment decreased, and self-employment was unchanged. The number of persons working in goods-producing industries increased by 400 persons.

On a year-over-year basis, total employment was down by 200 persons.

Table 3 *Monthly and Yearly Change in Employment by Selected Characteristics
Northwest Territories, July 2015*

	Jul-15	Jun-15	Jul-14	Jun-15 to Jul-15	Jul-14 to Jul-15
				Change (persons)	
Total Employment	22,500	22,200	22,700	300	(200)
Full-time	19,900	19,500	20,500	400	(600)
Part-time	2,600	2,700	2,200	(100)	400
Employees	20,600	20,300	20,800	300	(200)
Public	9,400	9,800	9,500	(400)	(100)
Private	11,200	10,500	11,300	700	(100)
Self-employment	1,900	1,900	2,000	-	(100)
Goods Producing	4,500	4,100	3,900	400	600
Service Producing	18,000	18,000	18,900	-	(900)

The following table presents historical labour force activity in the Northwest Territories.

Table 4 ***Labour Force Activity
Northwest Territories***

	Population 15 & Over	Labour Force	Employed	Unem- ployed	Not in the Labour Force	Partic- ipation Rate	Unemp- loyment Rate	Employ- ment Rate
Jul-15	31,800	24,500	22,500	2,000	7,300	77.0	8.2	70.8
Jun-15	31,900	23,800	22,200	1,700	8,000	74.6	7.1	69.6
May-15	32,000	23,500	21,600	1,900	8,500	73.4	8.1	67.5
Apr-15	32,100	23,200	21,600	1,600	8,800	72.3	6.9	67.3
Mar-15	32,200	23,600	21,700	1,900	8,500	73.3	8.1	67.4
Feb-15	32,200	23,600	21,800	1,800	8,600	73.3	7.6	67.7
Jan-15	32,300	23,400	21,600	1,800	8,900	72.4	7.7	66.9
Dec-14	32,300	23,300	21,600	1,700	9,000	72.1	7.3	66.9
Nov-14	32,300	23,400	21,800	1,700	8,900	72.4	7.3	67.5
Oct-14	32,300	23,700	21,900	1,800	8,700	73.4	7.6	67.8
Sep-14	32,300	24,300	22,500	1,800	8,000	75.2	7.4	69.7
Aug-14	32,300	24,600	22,700	1,900	7,700	76.2	7.7	70.3
Previous Years:								
Jul-14	32,300	24,900	22,700	2,200	7,400	77.1	8.8	70.3
Jul-13	32,600	26,200	24,300	1,900	6,400	80.4	7.3	74.5
Jul-12	32,400	25,800	23,500	2,300	6,600	79.6	8.9	72.5
Jul-11	32,300	25,500	23,500	2,000	6,800	78.9	7.8	72.8
Jul-10	32,000	24,000	21,900	2,100	8,100	75.0	8.8	68.4
Jul-09	31,800	22,800	21,200	1,600	9,000	71.7	7.0	66.7
Jul-08	31,800	24,600	22,600	2,000	7,200	77.4	8.1	71.1
Jul-07	31,600	25,200	23,500	1,600	6,400	79.7	6.3	74.4
Jul-06	31,200	25,100	23,500	1,600	6,100	80.4	6.4	75.3
Jul-05	31,200	24,400	23,000	1,400	6,800	78.2	5.7	73.7

Information on the territorial labour market is a result of the extension of Statistics Canada's national labour force survey (LFS) to the Northwest Territories. Data presented for the Northwest Territories is based on three-month moving averages, with survey counts rounded to the nearest 100 persons.

For additional information on the monthly release of labour force survey results for the Northwest Territories, visit the NWT Bureau of Statistics website at <http://www.statsnwt.ca> or call (867) 873-7147.

Next Release: September 4, 2015.