

NWT Labour Force Activity

September 2015

OVERVIEW

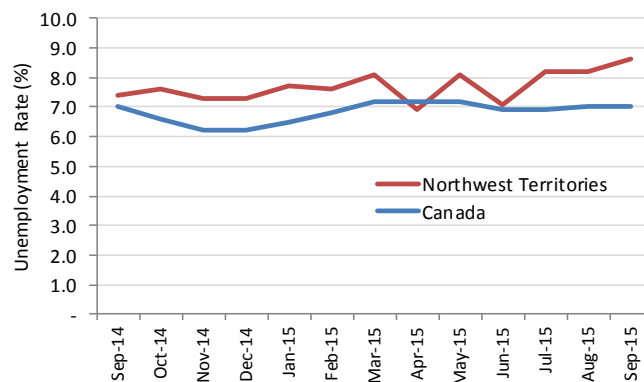
Statistics Canada estimates that in September 2015, 22,200 persons were employed in the Northwest Territories, representing an employment rate of 69.8%. This is a decrease of 300 persons over the previous month. The decline in the number of employed persons is partly accounted for by summer students returning to school. While the number of persons in the labor force is the same as September of last year, there are 300 fewer people employed in September 2015. Nationally, Canada’s employment rate was 62.0%.

Table 1: Labour Force Statistics - Northwest Territories

	September-2015	August-2015	September-2014	Change from Sept 2014 – Sept 2015	
				No. of Persons	%
Population 15+	31,800	31,800	32,300	(500)	-1.5
Labour force	24,300	24,500	24,300	-	0.0
Employment	22,200	22,500	22,500	(300)	-1.3
Full-time	19,400	19,800	20,400	(1,000)	-4.9
Part-time	2,800	2,700	2,100	700	33.3
Unemployment	2,100	2,000	1,800	300	16.7
Participation rate (%)	76.4	77.0	75.2		
Unemployment rate (%)	8.6	8.2	7.4		
Employment rate (%)	69.8	70.8	69.7		

At 8.6%, the September unemployment rate was little changed from the previous month, increasing by less than a percentage point. Year-over-year, the unemployment rate increased by 1.2 percentage points. The unemployment rate for Canada increased by 0.1 percentage points to 7.1%.

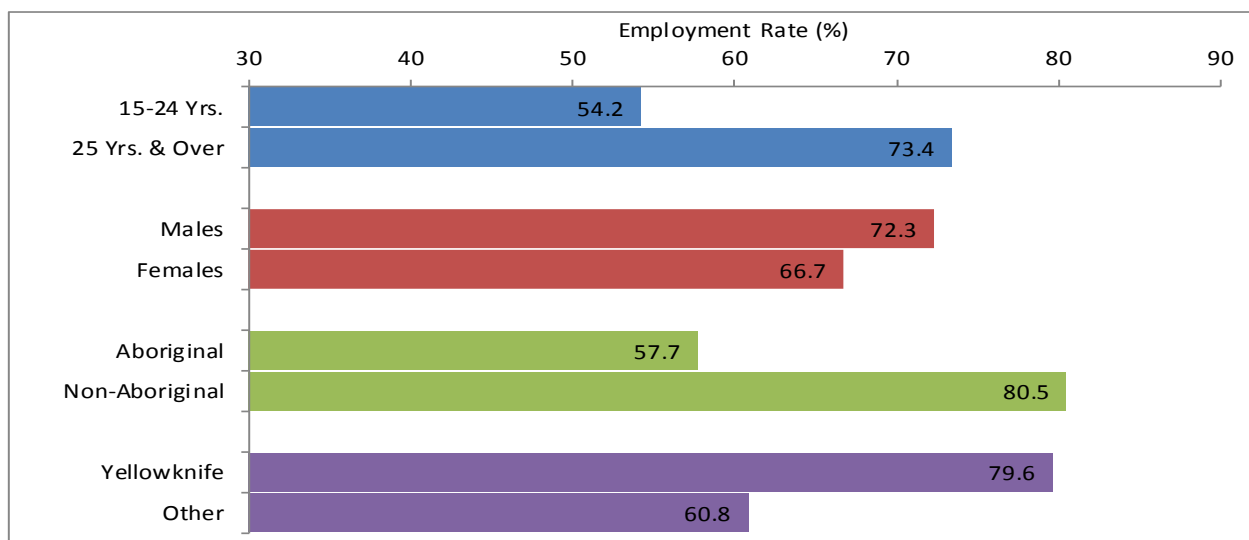
Figure 1: Unemployment rates during past 12 months, Northwest Territories & Canada



EMPLOYMENT BY KEY CHARACTERISTICS

The employment rate for youths aged 15-24 dropped 3.4 percentage points from last month compared to 0.6 percentage points among those aged 25 and over. While the employment rate for males remained higher than for females, it declined 1.9 percentage points from August, compared to a 0.6 percentage point decline for females. In Yellowknife, the employment rate was 2.4 percentage points lower than the previous month, while it was unchanged for the rest of the territory.

Figure 2: Employment rates by key characteristics, Northwest Territories, Sept 2015

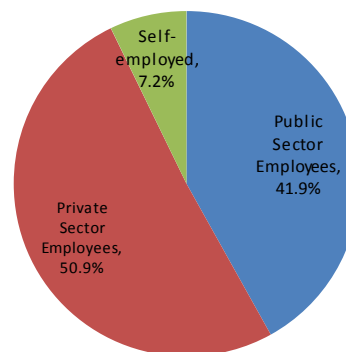


EMPLOYMENT BY INDUSTRY & CLASS OF WORKER

In September 2015, employment in the **goods-producing sector** increased by 300 persons compared to the same time last year. The **services-producing sector** employed 700 fewer persons, offsetting gains made in the goods-producing sector.

Compared to September 2014, employment in the private sector increased by 300 persons. This was offset by employment declines in the public sector and in self-employment. Figure 3 presents the distribution of the employed by class of worker.

Figure 3: Employed persons by class of worker
Northwest Territories, Sept 2015



HISTORICAL LABOUR FORCE ACTIVITY

Table 2: Labour Force Activity -Northwest Territories

	Population 15 & Over	Labour Force	Employed	Unem- ployed	Not in the Labour Force	Partic- ipation Rate	Unemp- loyment Rate	Employ- ment Rate
Sep-15	31,800	24,300	22,200	2,100	7,500	76.4	8.6	69.8
Aug-15	31,800	24,500	22,500	2,000	7,300	77.0	8.2	70.8
Jul-15	31,800	24,500	22,500	2,000	7,300	77.0	8.2	70.8
Jun-15	31,900	23,800	22,200	1,700	8,000	74.6	7.1	69.6
May-15	32,000	23,500	21,600	1,900	8,500	73.4	8.1	67.5
Apr-15	32,100	23,200	21,600	1,600	8,800	72.3	6.9	67.3
Mar-15	32,200	23,600	21,700	1,900	8,500	73.3	8.1	67.4
Feb-15	32,200	23,600	21,800	1,800	8,600	73.3	7.6	67.7
Jan-15	32,300	23,400	21,600	1,800	8,900	72.4	7.7	66.9
Dec-14	32,300	23,300	21,600	1,700	9,000	72.1	7.3	66.9
Nov-14	32,300	23,400	21,800	1,700	8,900	72.4	7.3	67.5
Oct-14	32,300	23,700	21,900	1,800	8,700	73.4	7.6	67.8
Previous Years:								
Sep-14	32,300	24,300	22,500	1,800	8,000	75.2	7.4	69.7
Sep-13	32,600	25,800	23,700	2,100	6,700	79.1	8.1	72.7
Sep-12	32,500	26,000	23,800	2,200	6,400	80.0	8.5	73.2
Sep-11	32,400	26,100	24,100	1,900	6,300	80.6	7.3	74.4
Sep-10	32,100	23,800	22,300	1,500	8,200	74.1	6.3	69.5
Sep-09	31,700	22,500	20,700	1,800	9,200	71.0	8.0	65.3
Sep-08	31,800	24,300	23,100	1,300	7,400	76.4	5.3	72.6
Sep-07	31,600	25,200	23,700	1,400	6,400	79.7	5.6	75.0
Sep-06	31,300	24,400	23,300	1,100	6,800	78.0	4.5	74.4
Sep-05	31,300	24,500	23,100	1,400	6,800	78.3	5.7	73.8

Information on the territorial labour market is a result of the extension of Statistics Canada's national labour force survey (LFS) to the Northwest Territories. Data presented for the Northwest Territories is based on three-month moving averages, with survey counts rounded to the nearest 100 persons.

For additional information on the monthly release of labour force survey results for the Northwest Territories, visit the NWT Bureau of Statistics website at <http://www.statsnwt.ca/> or call (867) 873-7147.

Next Release: November 6, 2015