

# NWT Labour Force Activity

Released: January 6, 2017

[www.statsnwt.ca](http://www.statsnwt.ca)

December 2016

## Overview

In December 2016, Statistics Canada estimated that 21,800 persons were employed in the Northwest Territories. This represents an employment rate of 67.3%. Canada's employment rate was 61.2%, with Yukon (71.1%) having the highest employment rate, followed by the Northwest Territories.

In the Northwest Territories, the employment rate decreased for the fourth consecutive month following historic seasonal employment patterns of higher employment rates during summer months and lower employment rates during winter months.

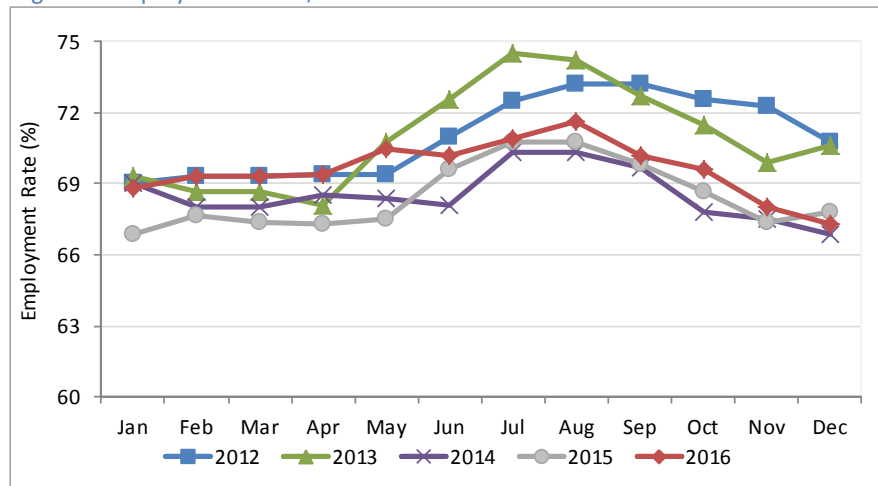
Monthly employment rates were higher in 2016 compared to the previous two years, with the exception of two months.

The unemployment rate dropped from 10.0% in December 2015 to 6.8% last month. This is a result of fewer people looking for employment in December 2016.

Table 1: Labour Force Statistics - Northwest Territories

	Dec-2016	Nov-2016	Dec-2015	Change from 12 months ago	
				#	%
Population 15+	32,400	32,500	32,000	400	1.3
Labour force	23,400	23,700	24,100	(700)	(2.9)
Employment	21,800	22,100	21,700	100	0.5
Full-time	19,200	19,300	18,600	600	3.2
Part-time	2,600	2,700	3,000	(400)	(13.3)
Unemployment	1,600	1,600	2,400	(800)	(33.3)
Participation rate (%)	72.2	72.9	75.3		
Unemployment rate (%)	6.8	6.8	10.0		
Employment rate (%)	67.3	68.0	67.8		

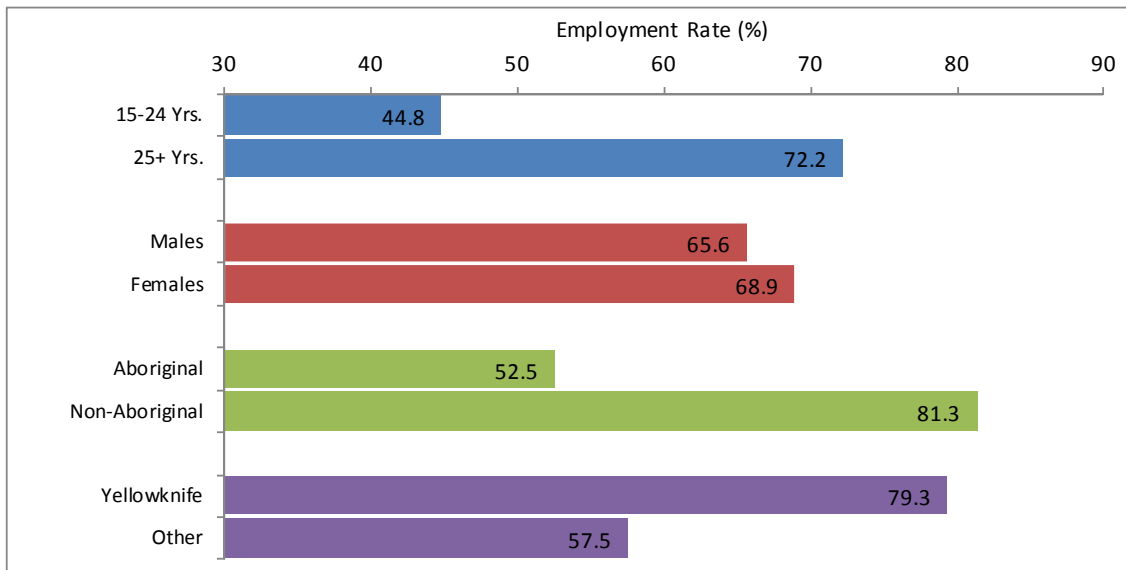
Figure 1: Employment Rates, NWT 2012 - 2016



## Employment by key characteristics

Employment rates for most key characteristics declined in December 2016 compared to December 2015. The exception was Non-Aboriginal persons (+2.1) and those living in Yellowknife (+1.5). The increase in the employment rate for Non-Aboriginals further widens the gap with Aboriginal persons whose employment rate declined by 2.8 percentage points to 52.5% in December 2016.

Figure 2: Employment rates by key characteristics, Dec 2016

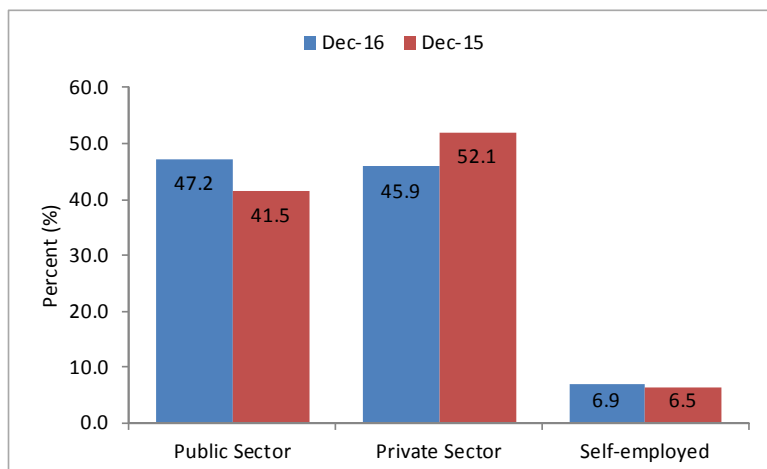


## Employment by industry & class of worker

Compared to December 2015, the proportion of persons in private sector employment decreased 6.2 percentage points to 45.9%. During the same time period, the proportion employed in the public sector and in self-employment increased by 5.8 and 0.4 percentage points respectively.

In December 2016, employment in the services-producing industry increased from 81.1% to 85.8% of total employment. The proportion employed in the goods-producing industry decreased to 14.2% of total employment.

Figure 3: Percentage Employment by Class of Worker, Dec 2015 & 2016



## Historical labour force activity

Table 2: Labour Force Activity -Northwest Territories

	Population 15 & Over	Labour Force	Employed	Unem- ployed	Not in the Labour Force	Partic- ipation Rate	Unemp- loyment Rate	Employ- ment Rate
Dec-16	32,400	23,400	21,800	1,600	9,000	72.2	6.8	67.3
Nov-16	32,500	23,700	22,100	1,600	8,800	72.9	6.8	68.0
Oct-16	32,600	24,400	22,700	1,700	8,200	74.8	7.0	69.6
Sep-16	32,600	24,500	22,900	1,600	8,100	75.2	6.5	70.2
Aug-16	32,700	25,300	23,400	1,900	7,400	77.4	7.5	71.6
Jul-16	32,600	25,100	23,100	2,100	7,500	77.0	8.4	70.9
Jun-16	32,600	24,900	22,900	2,000	7,600	76.4	8.0	70.2
May-16	32,500	24,600	22,900	1,700	7,900	75.7	6.9	70.5
Apr-16	32,400	24,100	22,500	1,600	8,200	74.4	6.6	69.4
Mar-16	32,300	24,200	22,400	1,800	8,000	74.9	7.4	69.3
Feb-16	32,200	24,400	22,300	2,100	7,800	75.8	8.6	69.3
Jan-16	32,100	24,400	22,100	2,300	7,600	76.0	9.4	68.8
Previous Years:								
Dec-15	32,000	24,100	21,700	2,400	7,900	75.3	10.0	67.8
Dec-14	32,300	23,300	21,600	1,700	9,000	72.1	7.3	66.9
Dec-13	32,600	25,000	23,000	2,000	7,600	76.7	8.0	70.6
Dec-12	32,500	24,900	23,000	1,800	7,700	76.6	7.2	70.8
Dec-11	32,300	24,300	22,400	1,900	8,000	75.2	7.8	69.3
Dec-10	32,100	23,600	21,800	1,800	8,500	73.5	7.6	67.9
Dec-09	31,700	21,800	20,500	1,300	9,900	68.8	6.0	64.7
Dec-08	31,700	23,200	22,000	1,200	8,500	73.2	5.2	69.4
Dec-07	31,700	24,000	22,600	1,400	7,700	75.7	5.8	71.3
Dec-06	31,300	24,200	22,700	1,500	7,100	77.3	6.2	72.5

Information on the territorial labour market is a result of the extension of Statistics Canada's national labour force survey (LFS) to the Northwest Territories. Data presented for the Northwest Territories is based on three-month moving averages, with survey counts rounded to the nearest 100 persons.

For additional information on the monthly release of labour force survey results for the Northwest Territories, visit the NWT Bureau of Statistics website at <http://www.statsnwt.ca/> or call (867) 767-9169.

*Next Release: February 10, 2017*