

## NWT Labour Force Activity

October 2016

### OVERVIEW

Statistics Canada estimates that in October 2016, 22,700 persons were employed in the Northwest Territories. The employment rate was 69.6%, down slightly from 70.2% in September. Compared with 12 months earlier, the labour force increased by 300, while employment increased by 800. The number of unemployed persons declined by 500 compared to October 2015.

Nationally, Canada's employment rate was 61.5%, with Yukon (73.9%) having the highest employment rate, followed by the Northwest Territories (69.6%), Alberta (66.9%), and Saskatchewan (65.7%).

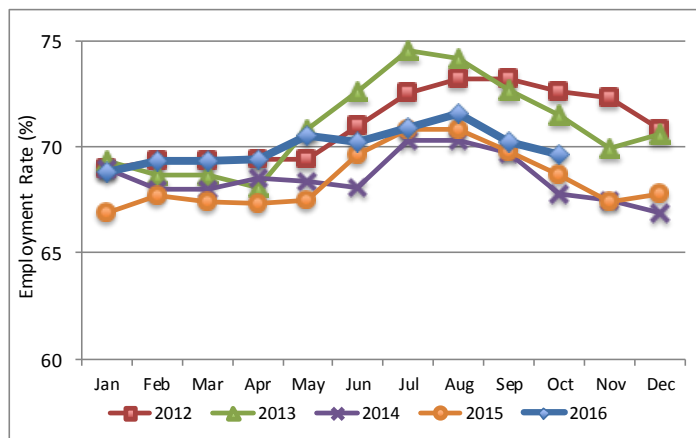
Table 1: Labour Force Statistics - Northwest Territories

	October - 2016	September-2016	October-2015	Change from Oct 2015 – Oct 2016	
				Number	%
Population 15+	32,600	32,600	31,900	700	2.2
Labour force	24,400	24,500	24,100	300	1.2
Employment	22,700	22,900	21,900	800	3.7
Full-time	20,100	20,600	19,300	800	4.1
Part-time	2,500	2,300	2,600	(100)	-3.8
Unemployment	1,700	1,600	2,200	(500)	-22.7
Participation rate (%)	74.8	75.2	75.5		
Unemployment rate (%)	7.0	6.5	9.1		
Employment rate (%)	69.6	70.2	68.7		

Figure 1 provides historical employment rates for the NWT. The 2016 employment rate was consistently higher than in the previous two years but remains lower than 2012 and 2013.

The unemployment rate was the lowest for the month of October since 2010.

Figure 1: Employment Rates, NWT 2012 - 2016

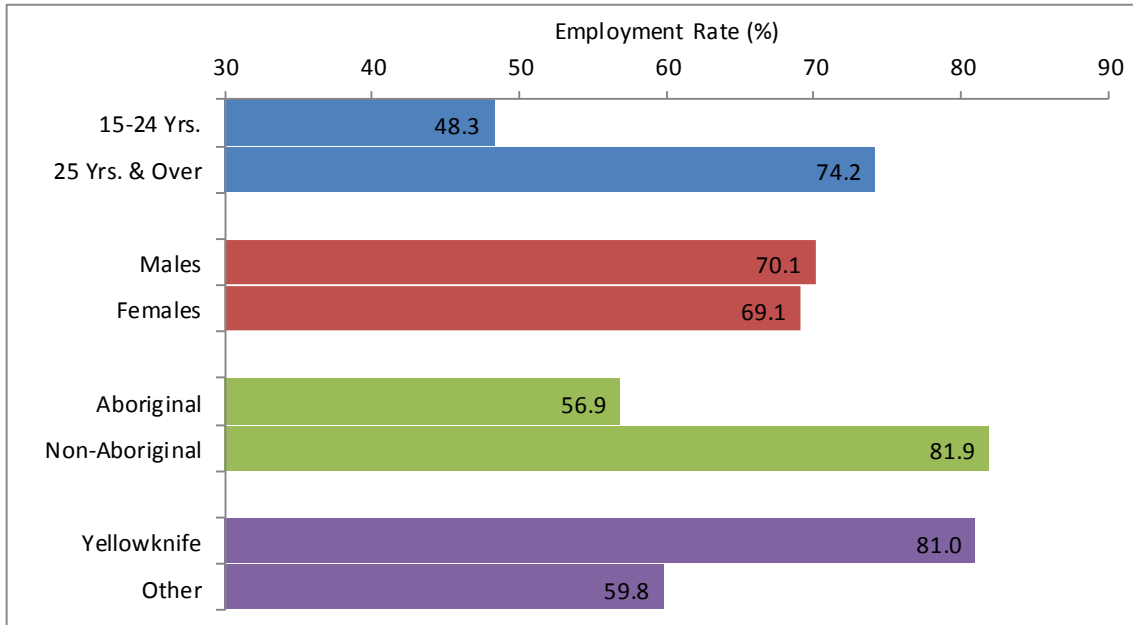


## EMPLOYMENT BY KEY CHARACTERISTICS

On a year-over-year basis, employment rates increased for persons aged 25 and over, females, Non-Aboriginal people, and those living in Yellowknife.

Figure 2 provides employment rates by key characteristics for October 2016.

Figure 2: Employment rates by key characteristics, Oct 2016

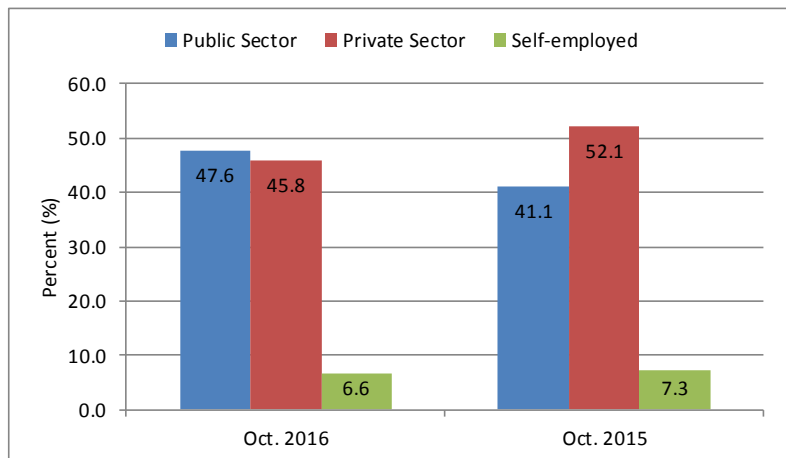


## EMPLOYMENT BY INDUSTRY & CLASS OF WORKER

In October 2016, the service-producing sector employed 1,600 more persons, offsetting losses from the goods-producing sector.

Figure 3 presents changes in the distribution of employed persons by class of worker. The proportion of private sector employment and self-employment has declined compared to October 2015.

Figure 3: Percentage Employment by Class of Worker, Oct 2015 & 2016



## HISTORICAL LABOUR FORCE ACTIVITY

Table 3: Labour Force Activity -Northwest Territories

	Population 15 & Over	Labour Force	Employed	Unem- ployed	Not in the Labour Force	Partic- ipation Rate	Unemp- loyment Rate	Employ- ment Rate
Oct-16	32,600	24,400	22,700	1,700	8,200	74.8	7.0	69.6
Sep-16	32,600	24,500	22,900	1,600	8,100	75.2	6.5	70.2
Aug-16	32,700	25,300	23,400	1,900	7,400	77.4	7.5	71.6
Jul-16	32,600	25,100	23,100	2,100	7,500	77.0	8.4	70.9
Jun-16	32,600	24,900	22,900	2,000	7,600	76.4	8.0	70.2
May-16	32,500	24,600	22,900	1,700	7,900	75.7	6.9	70.5
Apr-16	32,400	24,100	22,500	1,600	8,200	74.4	6.6	69.4
Mar-16	32,300	24,200	22,400	1,800	8,000	74.9	7.4	69.3
Feb-16	32,200	24,400	22,300	2,100	7,800	75.8	8.6	69.3
Jan-16	32,100	24,400	22,100	2,300	7,600	76.0	9.4	68.8
Dec-15	32,000	24,100	21,700	2,400	7,900	75.3	10.0	67.8
Nov-15	31,900	24,000	21,500	2,500	8,000	75.2	10.4	67.4
Previous Years:								
Oct-15	31,900	24,100	21,900	2,200	7,700	75.5	9.1	68.7
Oct-14	32,300	23,700	21,900	1,800	8,700	73.4	7.6	67.8
Oct-13	32,600	25,200	23,300	2,000	7,300	77.3	7.9	71.5
Oct-12	32,500	25,500	23,600	1,900	7,000	78.5	7.5	72.6
Oct-11	32,300	25,100	23,400	1,800	7,200	77.7	7.2	72.4
Oct-10	32,100	23,300	22,000	1,300	8,800	72.6	5.6	68.5
Oct-09	31,700	22,600	20,800	1,700	9,100	71.3	7.5	65.6
Oct-08	31,800	24,200	23,100	1,100	7,600	76.1	4.5	72.6
Oct-07	31,600	24,800	23,400	1,400	6,800	78.5	5.6	74.1
Oct-06	31,300	24,100	23,000	1,100	7,200	77.0	4.6	73.5

Information on the territorial labour market is a result of the extension of Statistics Canada's national labour force survey (LFS) to the Northwest Territories. Data presented for the Northwest Territories is based on three-month moving averages, with survey counts rounded to the nearest 100 persons.

For additional information on the monthly release of labour force survey results for the Northwest Territories, visit the NWT Bureau of Statistics website at <http://www.statsnwt.ca/> or call **(867) 767-9169**.

Next Release: December 2, 2016