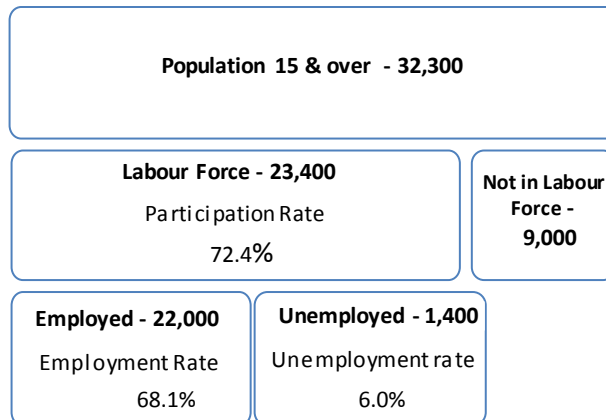


# Monthly Labour Force Activity - August 2017-

### Overview

In August 2017, there were 32,300 people aged 15 years or older in the Northwest Territories. Of these, 23,400 were working or actively looking for work representing a participation rate of 72.4%. The number of people employed increased for the third consecutive month in August, up 900 to 22,000. On the other hand, unemployment was little changed from the previous month with 1,400 people not working last month.

Figure 1: Labour Force Statistics - Northwest Territories



On an annual basis, employment in the Northwest Territories decreased by 1,400 persons. At 68.1%, the August 2017 employment rate was 3.5 percentage points lower than the same month last year. Job losses over the past year occurred entirely in full-time employment, while part-time employment was unchanged.

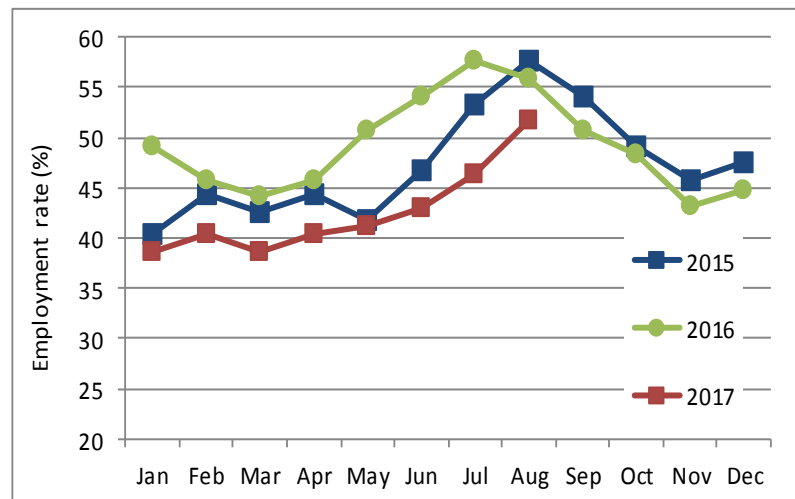
In the 12 months to August 2017, unemployment dropped by 500 persons as more unemployed persons left the labour force. As well, the unemployment rate dropped 1.5 percentage points

to 6.0%.

### NWT youth employment

Figure 2 shows the historical employment rates among youths aged 15-24. During the summer months, employment rates generally increase as a result of summer students' employment. In the summer months of 2017, employment rates increased following the historical pattern, but stayed lower than those of recent years.

Figure 2: Employment Rates for Youths Aged 15-24 Years, NWT 2015 - 2017

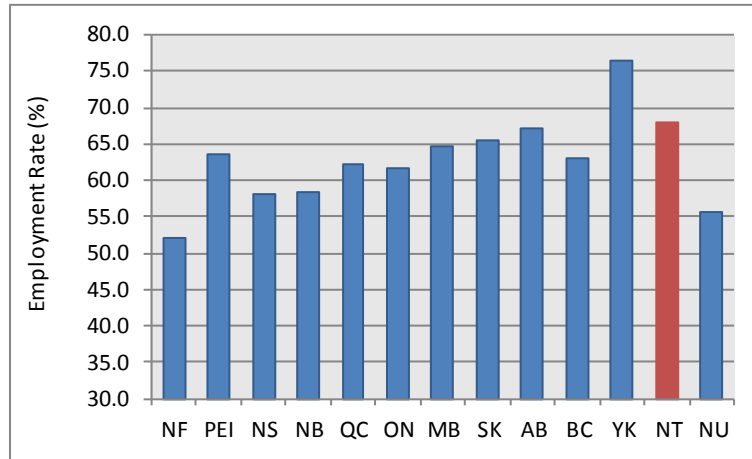


## National highlights

For Canada overall, employment increased by 0.1% from the previous month. Both the employment rate and the unemployment rate were unchanged at 62.5% and 6.4%, respectively.

Among the provinces and territories, Yukon (76.4%) maintained the highest employment rate, followed by the Northwest Territories (68.1%), and Alberta (65.6%).

Figure 3: Employment Rates, Provinces & Territories, August 2017



## Employment by key demographic characteristics

The year-over-year, the number of employed persons dropped in the NWT employment across all key demographic characteristics. Except for Yellowknife which remained unchanged, employment rates dropped as well, compared to August 2016.

Table 1: Employment & Employment Rates by Key Characteristics, NWT

	Aug-17		Jul-17		Aug-16		Change in persons from	
	Employment (Persons)	Rate (%)	Employment (Persons)	Rate (%)	Employment (Persons)	Rate (%)	1 Month ago	1 Year ago
Northwest Territories	22,000	68.1	21,500	66.4	23,400	71.6	500	(1,400)
15-24 Yrs.	2,900	51.8	2,600	46.4	3,300	55.9	300	(400)
25+ Yrs.	19,100	71.3	18,900	70.5	20,000	74.6	200	(900)
Males	11,300	69.8	10,800	66.7	12,200	74.4	500	(900)
Females	10,600	65.4	10,700	66.0	11,100	68.5	(100)	(500)
Aboriginal	8,500	54.8	8,100	51.9	9,400	60.3	400	(900)
Non-Aboriginal	13,500	80.4	13,400	79.8	14,000	82.4	100	(500)
Yellowknife	11,600	79.5	11,500	78.2	12,000	79.5	100	(400)
Rest of the Territory	10,400	58.4	10,000	56.5	11,300	64.2	400	(900)

## Employment by employment type, class of worker, and industry

In spite of the overall decline in employment between August 2016 and August 2017, private sector employment and self-employment increased by 400 and 200 persons respectively. These increases were however offset by the decline in public sector employment.

## Historical labour force activity

The following table presents historical labour force activity in the Northwest Territories.

Table 2: Labour Force Activity -Northwest Territories

	Population 15 & Over	Labour Force	Employed	Unem- ployed	Not in the Labour Force	Partic- ipation Rate	Unemp- loyment Rate	Employ- ment Rate
Aug-17	32,300	23,400	22,000	1,400	9,000	72.4	6.0	68.1
Jul-17	32,400	23,000	21,500	1,500	9,300	71.0	6.5	66.4
Jun-17	32,400	22,700	21,300	1,400	9,700	70.1	6.2	65.7
May-17	32,400	22,400	21,100	1,400	9,900	69.1	6.3	65.1
Apr-17	32,400	22,800	21,600	1,200	9,600	70.4	5.3	66.7
Mar-17	32,400	22,900	21,400	1,600	9,400	70.7	7.0	66.0
Feb-17	32,300	22,800	21,100	1,600	9,600	70.6	7.0	65.3
Jan-17	32,400	22,700	21,100	1,600	9,600	70.1	7.0	65.1
Dec-16	32,400	23,400	21,800	1,600	9,000	72.2	6.8	67.3
Nov-16	32,500	23,700	22,100	1,600	8,800	72.9	6.8	68.0
Oct-16	32,600	24,400	22,700	1,700	8,200	74.8	7.0	69.6
Sep-16	32,600	24,500	22,900	1,600	8,100	75.2	6.5	70.2
Previous Years:								
Aug-16	32,700	25,300	23,400	1,900	7,400	77.4	7.5	71.6
Aug-15	31,800	24,500	22,500	2,000	7,300	77.0	8.2	70.8
Aug-14	32,300	24,600	22,700	1,900	7,700	76.2	7.7	70.3
Aug-13	32,600	26,100	24,200	2,000	6,400	80.1	7.7	74.2
Aug-12	32,500	26,100	23,800	2,300	6,300	80.3	8.8	73.2
Aug-11	32,400	26,100	23,900	2,200	6,300	80.6	8.4	73.8
Aug-10	32,100	24,200	22,300	1,900	7,900	75.4	7.9	69.5
Aug-09	31,800	23,100	21,500	1,600	8,600	72.6	6.9	67.6
Aug-08	31,800	24,600	23,100	1,400	7,200	77.4	5.7	72.6
Aug-07	31,600	25,200	23,600	1,600	6,400	79.7	6.3	74.7

Information on the territorial labour market is a result of the extension of Statistics Canada's national Labour Force Survey (LFS) to the Northwest Territories. Data presented for the Northwest Territories is based on three-month moving averages, with survey counts rounded to the nearest 100 persons.

For additional information on the monthly release of labour force survey results for the Northwest Territories, visit the NWT Bureau of Statistics website at <http://www.statsnwt.ca/> or call (867) 767-9169.

Next Release: October 6, 2017