

Monthly Labour Force Activity - May 2017 -

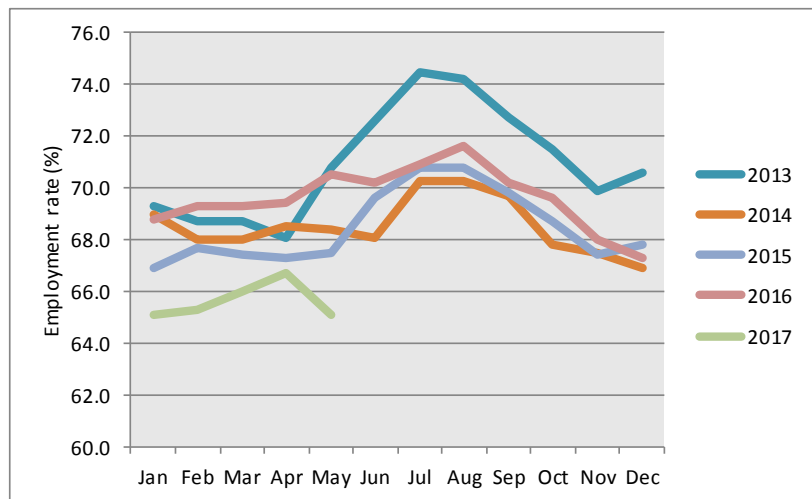
Overview

Statistics Canada estimates that in May 2017, 21,100 out of 32,400 residents 15 years of age and older were employed in the Northwest Territories, representing an employment rate of 65.1%. Between April and May 2017, employment dropped by 2.3% or 500 persons.

Year-over-year, there were 1,800 less people employed in the NWT compared to May 2016. Most of the job losses occurred in the services-producing industry.

The employment rate also dropped 1.6 percentage points between April and May 2017. This drop contrasts with previous years when employment rates increased or were little changed (Figure 1).

Figure 1: Employment Rates, NWT 2013 - 2017



National highlights

Nationally, the employment rate in Canada rose 0.6 percentage points to 61.1% in May 2017, while the unemployment rate dropped to 6.8%. Among the provinces and territories, Yukon (74.1%) had the highest employment rate, followed by Alberta (66.6%) and the Northwest Territories (65.1%).

Table 1: Labour Force Statistics - Northwest Territories, May 2017

| | May-17 | Apr-17 | May-16 | Change from 12 months ago | |
|------------------------|---------------|---------------|---------------|---------------------------|--------------|
| | | | | Number | % |
| Population 15+ | 32,400 | 32,400 | 32,500 | (100) | (0.3) |
| Labour force | 22,400 | 22,800 | 24,600 | (2,200) | (8.9) |
| Employment | 21,100 | 21,600 | 22,900 | (1,800) | (7.9) |
| Full-time | 18,700 | 19,000 | 19,600 | (900) | (4.6) |
| Part-time | 2,400 | 2,600 | 3,300 | (900) | (27.3) |
| Unemployment | 1,400 | 1,200 | 1,700 | (300) | (17.6) |
| Participation rate (%) | 69.1 | 70.4 | 75.7 | | |
| Unemployment rate (%) | 6.3 | 5.3 | 6.9 | | |
| Employment rate (%) | 65.1 | 66.7 | 70.5 | | |

2017-016

ISSN-0827-3545

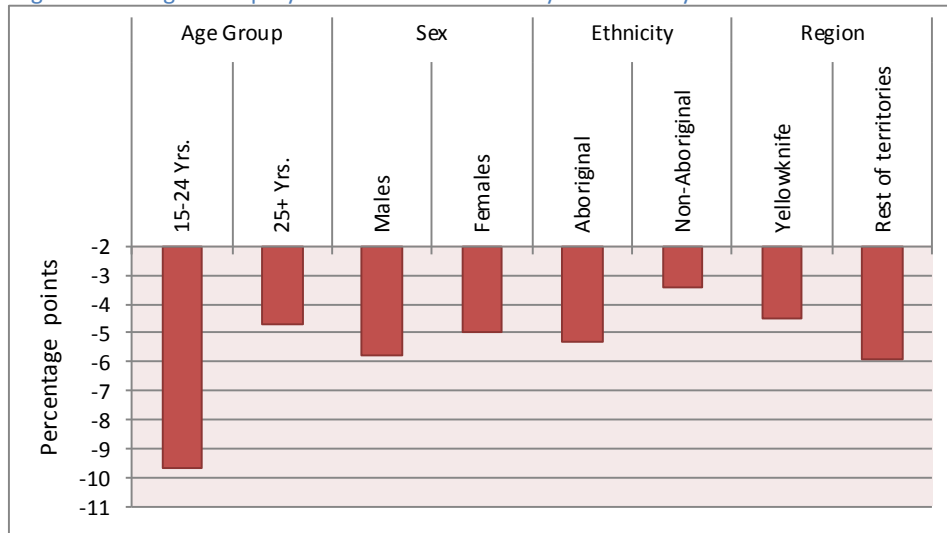


Employment by key demographic characteristics

In May 2017, there were 1,800 fewer people employed in the NWT compared to the same month last year. The drop in employment was highest among males, persons aged 25 and over, Aboriginal persons, and people living in Yellowknife.

Similarly, year-over-year employment rates declined across all key demographic characteristics (Figure 2). Youths aged 15-24 had the highest decline, followed by those living outside of Yellowknife, and males.

Figure 2: Change in employment rates between May 2016 & May 2017



Employment by employment type, class of worker, and industry

The number of employed persons decreased for all selected characteristics between May 2016 and May 2017. The only exception was the goods-producing industry where employment was unchanged from May last year (Table 2).

Table 1: Monthly and Yearly Change in Employment by Selected Characteristics

| | May-17 | Apr-17 | May-16 | Apr-2017 to May-2017 Change (persons) | May-2016 to May-2017 Change (persons) |
|-------------------|--------|--------|--------|--|--|
| Total Employment | 21,100 | 21,600 | 22,900 | (500) | (1,800) |
| Full-time | 18,700 | 19,000 | 19,600 | (300) | (900) |
| Part-time | 2,400 | 2,600 | 3,300 | (200) | (900) |
| Employees | 19,500 | 19,900 | 21,400 | (400) | (1,900) |
| Public | 9,600 | 9,800 | 10,900 | (200) | (1,300) |
| Private | 10,000 | 10,100 | 10,400 | (100) | (400) |
| Self-employment | 1,500 | 1,700 | 1,500 | (200) | - |
| Goods Producing | 3,400 | 3,400 | 3,400 | - | - |
| Service Producing | 17,600 | 18,200 | 19,400 | (600) | (1,800) |

Historical labour force activity

Table 2: Labour Force Activity -Northwest Territories

| | Population 15 & Over | Labour Force | Employed | Unem- ployed | Not in the Labour Force | Partic- ipation Rate | Unemp- loyment Rate | Employ- ment Rate |
|-----------------|-------------------------|-----------------|----------|-----------------|-------------------------------|----------------------------|---------------------------|-------------------------|
| May-17 | 32,400 | 22,400 | 21,100 | 1,400 | 9,900 | 69.1 | 6.3 | 65.1 |
| Apr-17 | 32,400 | 22,800 | 21,600 | 1,200 | 9,600 | 70.4 | 5.3 | 66.7 |
| Mar-17 | 32,400 | 22,900 | 21,400 | 1,600 | 9,400 | 70.7 | 7.0 | 66.0 |
| Feb-17 | 32,300 | 22,800 | 21,100 | 1,600 | 9,600 | 70.6 | 7.0 | 65.3 |
| Jan-17 | 32,400 | 22,700 | 21,100 | 1,600 | 9,600 | 70.1 | 7.0 | 65.1 |
| Dec-16 | 32,400 | 23,400 | 21,800 | 1,600 | 9,000 | 72.2 | 6.8 | 67.3 |
| Nov-16 | 32,500 | 23,700 | 22,100 | 1,600 | 8,800 | 72.9 | 6.8 | 68.0 |
| Oct-16 | 32,600 | 24,400 | 22,700 | 1,700 | 8,200 | 74.8 | 7.0 | 69.6 |
| Sep-16 | 32,600 | 24,500 | 22,900 | 1,600 | 8,100 | 75.2 | 6.5 | 70.2 |
| Aug-16 | 32,700 | 25,300 | 23,400 | 1,900 | 7,400 | 77.4 | 7.5 | 71.6 |
| Jul-16 | 32,600 | 25,100 | 23,100 | 2,100 | 7,500 | 77.0 | 8.4 | 70.9 |
| Jun-16 | 32,600 | 24,900 | 22,900 | 2,000 | 7,600 | 76.4 | 8.0 | 70.2 |
| Previous Years: | | | | | | | | |
| May-16 | 32,500 | 24,600 | 22,900 | 1,700 | 7,900 | 75.7 | 6.9 | 70.5 |
| May-15 | 32,000 | 23,500 | 21,600 | 1,900 | 8,500 | 73.4 | 8.1 | 67.5 |
| May-14 | 32,300 | 24,300 | 22,100 | 2,200 | 8,000 | 75.2 | 9.1 | 68.4 |
| May-13 | 32,500 | 25,200 | 23,000 | 2,200 | 7,300 | 77.5 | 8.7 | 70.8 |
| May-12 | 32,400 | 24,700 | 22,500 | 2,200 | 7,700 | 76.2 | 8.9 | 69.4 |
| May-11 | 32,200 | 24,700 | 22,700 | 2,000 | 7,500 | 76.7 | 8.1 | 70.5 |
| May-10 | 31,900 | 22,400 | 20,700 | 1,700 | 9,600 | 70.2 | 7.6 | 64.9 |
| May-09 | 31,800 | 22,700 | 21,100 | 1,600 | 9,100 | 71.4 | 7.0 | 66.4 |
| May-08 | 31,800 | 23,600 | 22,000 | 1,600 | 8,200 | 74.2 | 6.8 | 69.2 |
| May-07 | 31,500 | 24,700 | 23,300 | 1,400 | 6,800 | 78.4 | 5.7 | 74.0 |

Information on the territorial labour market is a result of the extension of Statistics Canada's national labour force survey (LFS) to the Northwest Territories. Data presented for the Northwest Territories is based on three-month moving averages, with survey counts rounded to the nearest 100 persons.

For additional information on the monthly release of labour force survey results for the Northwest Territories, visit the NWT Bureau of Statistics website at <http://www.statsnwt.ca/> or call (867) 767-9169.

Next Release: July 7, 2017