

June 16, 2016

Northwest Territories Population – April 2016

On April 1, 2016 Statistics Canada estimated that 44,340 people were living in the Northwest Territories, an increase of 0.4% from the previous year. At the national level, Canada's population increased by 1.1% between April 1, 2015 and April 1, 2016. All other provinces and territories also experienced positive growth.

**Table 1 Population Estimates and Annual Rate of Growth, by Province and Territory
April 1, 2013 to April 1, 2016**

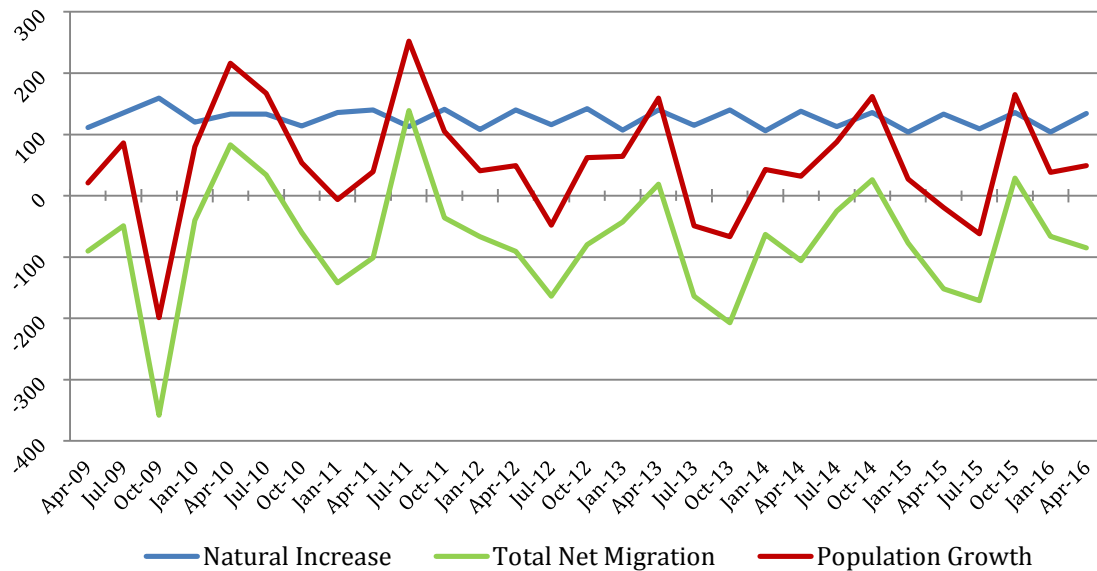
	2016 Apr 1	% Change	2015 Apr 1	% Change	2014 Apr 1	% Change	2013 Apr 1	% Change
Canada	36,155,487	1.1	35,754,786	0.9	35,420,519	1.1	35,022,076	1.2
Northwest Territories	44,340	0.4	44,150	0.6	43,892	-0.1	43,933	0.5
Nunavut	37,315	2.1	36,542	1.8	35,909	2.3	35,090	1.2
Yukon	37,294	0.6	37,056	1.4	36,537	0.8	36,261	1.4
British Columbia	4,720,932	1.0	4,672,474	1.1	4,621,026	1.1	4,569,903	0.9
Alberta	4,249,842	1.8	4,175,701	2.1	4,088,434	3.0	3,969,000	2.9
Saskatchewan	1,146,655	1.4	1,130,537	1.1	1,118,064	1.6	1,100,053	1.8
Manitoba	1,308,912	1.5	1,289,489	1.1	1,275,395	1.1	1,261,303	1.2
Ontario	13,920,499	1.2	13,752,091	0.8	13,638,132	1.0	13,504,382	1.0
Quebec	8,310,708	0.8	8,245,896	0.7	8,191,820	0.8	8,129,828	0.9
New Brunswick	755,868	0.2	754,185	-0.1	754,960	-0.1	755,605	-0.1
Nova Scotia	947,284	0.5	942,366	0.0	942,393	-0.1	943,439	-0.1
Prince Edward Island	147,390	0.8	146,175	0.4	145,629	0.4	145,071	0.1
Newfoundland & Labrador	528,448	0.1	528,124	0.0	528,328	0.0	528,208	0.4

Between April 1, 2015 and April 1, 2016, the population in the Northwest Territories increased by 190 persons. The components of natural increase during this period consisted of 691 births and 208 deaths, resulting in a net increase of 483 persons. Inter-provincial migration accounted for 2,284 persons moving into the Northwest Territories from other provinces and territories, while 2,736 persons moved away, representing a net loss of 452 persons. Internationally, there was a net in-migration of 159 persons.

The NWT population grew by 49 persons between January 1, 2016 and April 1, 2016, the third consecutive quarter of growth. The population increase was a result of a gain of 134 persons through natural increase and loss of 85 persons through migration.

Since natural increase is positive and stable over time, population changes in the Northwest Territories are mainly driven by total net migration which includes international migration (Figure 1). As such, population growth follows the same trend as total net migration, but is shifted upwards due to the positive influence of natural increase. Between April 1, 2009 and April 1, 2016 there have been only six instances where more people moved into the territory than out.

Figure 1 Components of Population Change
April 1, 2009 to April 1, 2016



The detailed components of population change for the Northwest Territories since 2009 are presented in Table 2.

For more information about these estimates or for community level population estimates and projections, please visit the NWT Bureau of Statistics website at <http://www.statsnwt.ca> or call (867) 767-9169.

**Table 2 Components of Population Change, by Time Period
Northwest Territories – January 1, 2009 to April 1, 2016**

		Beginning Population	Ending Population	Births	Deaths	--- Interprovincial Migration ---			Net International	Error of Closure
						In	Out	Net		
2016	Jan-Mar	44,291	44,340	181	47	638	745	-107	22	-
2015	Jan-Dec	44,169	44,291	689	207	2,303	2,812	-509	149	-
	Oct-Dec	44,253	44,291	157	53	346	451	-105	39	-
	Jul-Sep	44,088	44,253	196	60	633	666	-33	62	-
	Apr-Jun	44,150	44,088	157	48	667	874	-207	36	-
	Jan-Mar	44,169	44,150	179	46	657	821	-164	12	-
2014	Jan-Dec	43,860	44,169	692	201	2,351	2,610	-259	77	-
	Oct-Dec	44,142	44,169	156	52	326	402	-76	-1	-
	Jul-Sep	43,980	44,142	195	59	524	529	-5	31	-
	Apr-Jun	43,892	43,980	159	46	835	873	-38	13	-
	Jan-Mar	43,860	43,892	182	44	666	806	-140	34	-
2013	Jan-Dec	43,774	43,860	697	196	1,871	2,474	-603	188	-
	Oct-Dec	43,817	43,860	157	51	286	369	-83	20	-
	Jul-Sep	43,884	43,817	197	57	312	539	-227	20	-
	Apr-Jun	43,933	43,884	160	45	613	865	-252	88	-
	Jan-Mar	43,774	43,933	183	43	660	701	-41	60	-
2012	Jan-Dec	43,647	43,774	695	190	1,864	2,394	-530	152	-
2011	Jan-Dec	43,258	43,647	690	188	2,169	2,274	-105	40	48
2010	Jan-Dec	42,962	43,258	700	184	1,890	2,060	-170	85	135
2009	Jan-Dec	43,109	42,962	711	186	1,661	2,214	-553	16	135

Note: *Net International* represents the net total of all Immigrants, Emigrants, Returning Canadians, Non-Permanent Residents and Individuals Temporarily Abroad.
Error of Closure represents the difference in population change as measured by the individual components of growth and that observed using 2011 and 2006 census-based population estimates.

Source: Statistics Canada, Demography Division.