

March 16, 2016

**Northwest Territories Population – January 2016**

On January 1, 2016 Statistics Canada estimated that 44,291 people were living in the Northwest Territories, an increase of 0.28% from the previous year. At the national level, Canada's population increased by 0.95% between January 1, 2015 and January 1, 2016. With the exception of Newfoundland and Labrador and New Brunswick, all other provinces and territories experienced positive growth.

**Table 1 Population Estimates and Annual Rate of Growth, by Province and Territory  
January 1, 2013 to January 1, 2016**

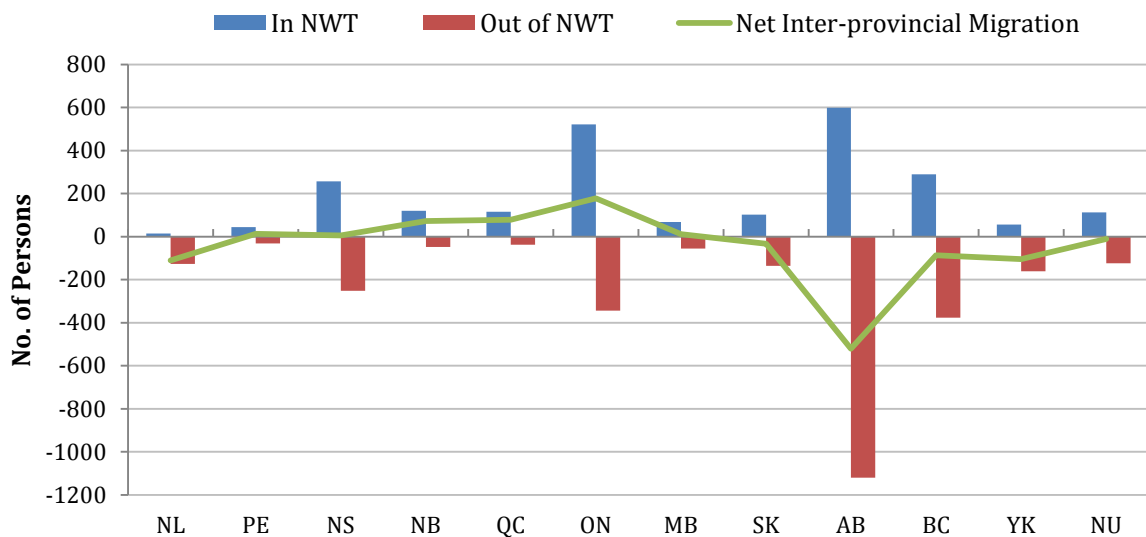
	2016 Jan 1	% Change	2015 Jan 1	% Change	2014 Jan 1	% Change	2013 Jan 1	% Change
Canada	36,048,521	0.95	35,709,420	1.04	35,340,422	1.15	34,938,672	1.16
<b>Northwest Territories</b>	<b>44,291</b>	<b>0.28</b>	<b>44,169</b>	<b>0.70</b>	<b>43,860</b>	<b>0.20</b>	<b>43,774</b>	<b>0.29</b>
Nunavut	37,174	2.24	36,358	1.95	35,664	1.78	35,039	1.73
Yukon	37,193	0.71	36,931	1.79	36,281	-0.07	36,307	1.62
British Columbia	4,707,021	0.87	4,666,446	1.24	4,609,216	1.04	4,561,633	0.87
Alberta	4,231,959	1.74	4,159,630	2.41	4,061,774	3.11	3,939,437	2.85
Saskatchewan	1,142,570	1.20	1,129,061	1.34	1,114,176	1.62	1,096,446	1.89
Manitoba	1,303,896	1.26	1,287,687	1.22	1,272,220	1.10	1,258,434	1.29
Ontario	13,873,933	1.01	13,735,130	0.89	13,613,731	1.02	13,476,879	1.03
Quebec	8,294,656	0.66	8,240,494	0.74	8,180,012	0.78	8,116,672	0.92
New Brunswick	754,735	-0.04	755,004	-0.08	755,627	-0.09	756,286	-0.02
Nova Scotia	945,824	0.25	943,502	0.03	943,234	-0.15	944,604	-0.06
Prince Edward Island	146,933	0.42	146,325	0.52	145,570	0.20	145,276	0.43
Newfoundland & Labrador	528,336	-0.07	528,683	-0.07	529,057	0.22	527,885	0.30

Between January 1, 2015 and January 1, 2016, the population in the Northwest Territories increased by 122 persons. The components of natural increase during this period consisted of 689 births and 207 deaths, resulting in a net increase of 482 persons. Inter-provincial migration accounted for 2,303 persons moving into the Northwest Territories from other provinces and territories, while 2,812 persons moved away, representing a net loss of 509 persons. Internationally, there was a net in-migration of 149 persons.

In terms of quarterly growth, the NWT population grew by 38 persons between October 1, 2015 and January 1, 2016. The population increase was a result of a gain of 104 persons through natural increase and loss of 66 persons through migration.

Historically, Alberta has accounted for the largest number of net inter-provincial migrants. Between January 1, 2015 and January 1, 2016, 599 persons moved to the NWT from Alberta and 1,120 persons moved from the territory to Alberta, resulting in the net loss of 521 persons. The territory also lost people to Newfoundland and Labrador (111), Yukon (104), BC (87), Saskatchewan (33) and Nunavut (11). The highest net gain of migrants was from Ontario (178) (Figure 1).

Figure 1 Inter-provincial Migration by Province and Territory, January 1, 2015 to January 1, 2016



The detailed components of population change for the Northwest Territories since 2010 are presented in Table 2.

For more information about these estimates or for community level population estimates and projections, please visit the NWT Bureau of Statistics website at <http://www.statsnwt.ca> or call (867) 767-9169.

**Table 2** Components of Population Change, by Time Period  
Northwest Territories - January 1, 2010 to January 1, 2016

		Beginning Population	Ending Population	Births	Deaths	---- Interprovincial Migration ----			Net International	Error of Closure
						In	Out	Net		
2015	Jan-Dec	44,169	44,291	689	207	2,303	2,812	-509	149	-
	Oct-Dec	44,253	44,291	157	53	346	451	-105	39	-
	Jul-Sep	44,088	44,253	196	60	633	666	-33	62	-
	Apr-Jun	44,150	44,088	157	48	667	874	-207	36	-
	Jan-Mar	44,169	44,150	179	46	657	821	-164	12	-
2014	Jan-Dec	43,860	44,169	692	201	2,351	2,610	-259	77	-
	Oct-Dec	44,142	44,169	156	52	326	402	-76	-1	-
	Jul-Sep	43,980	44,142	195	59	524	529	-5	31	-
	Apr-Jun	43,892	43,980	159	46	835	873	-38	13	-
	Jan-Mar	43,860	43,892	182	44	666	806	-140	34	-
2013	Jan-Dec	43,774	43,860	697	196	1,871	2,474	-603	188	-
	Oct-Dec	43,817	43,860	157	51	286	369	-83	20	-
	Jul-Sep	43,884	43,817	197	57	312	539	-227	20	-
	Apr-Jun	43,933	43,884	160	45	613	865	-252	88	-
	Jan-Mar	43,774	43,933	183	43	660	701	-41	60	-
2012	Jan-Dec	43,647	43,774	695	190	1,864	2,394	-530	152	-
2011	Jan-Dec	43,258	43,647	690	188	2,169	2,274	-105	40	48
2010	Jan-Dec	42,962	43,258	700	184	1,890	2,060	-170	85	135

Note: *Net International* represents the net total of all Immigrants, Emigrants, Returning Canadians, Non-Permanent Residents and Individuals Temporarily Abroad.  
*Error of Closure* represents the difference in population change as measured by the individual components of growth and that observed using 2011 and 2006 census-based population estimates.

Source: Statistics Canada, Demography Division.