

Consumer Price Index

April 2016

OVERVIEW

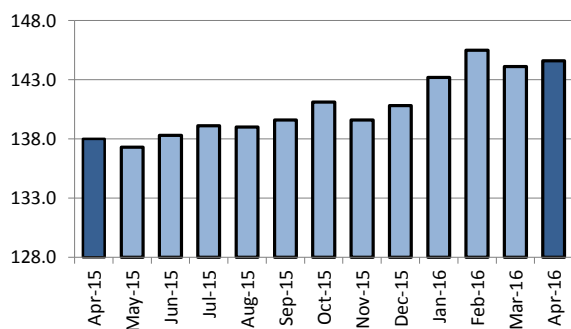
Information released today by Statistics Canada indicates that the Yellowknife All-Items Consumer Price Index in April rose 1.6% compared to one year ago. By comparison, the annual price increase was 1.7% for Canada, 1.7% for Edmonton, 0.7% for Whitehorse and 2.3 for Iqaluit.

ALL-ITEMS CONSUMER PRICE INDEX (2002=100)

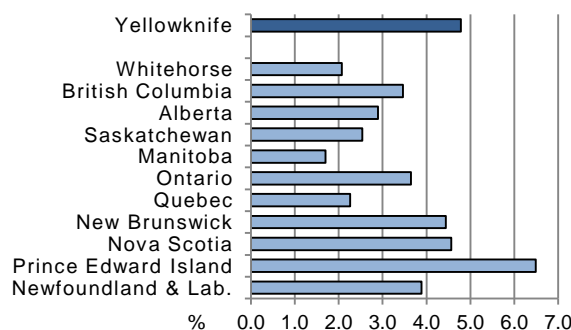
| | 16-Apr | 16-Mar | 15-Apr | % Change from | | 12-Month Average | | |
|-------------|--------|--------|--------|---------------|--------|------------------|--------|--------|
| | | | | 16-Mar | 15-Apr | 15-May | 14-May | % |
| | 16-Apr | 16-Mar | 15-Apr | 16-Mar | 15-Apr | 16-Apr | 15-Apr | Change |
| Yellowknife | 131.9 | 131.6 | 129.8 | 0.2 | 1.6 | 131.2 | 128.9 | 1.8 |
| Canada | 128.3 | 127.9 | 126.2 | 0.3 | 1.7 | 127.2 | 125.6 | 1.3 |
| Edmonton | 135.0 | 134.7 | 132.8 | 0.2 | 1.7 | 134.1 | 132.0 | 1.6 |
| Whitehorse | 124.4 | 124.2 | 123.5 | 0.2 | 0.7 | 124.6 | 123.9 | 0.6 |
| Iqaluit | 122.8 | 122.1 | 120.0 | 0.6 | 2.3 | 121.3 | 118.7 | 2.2 |

Compared to April 2015, consumer prices increased in Yellowknife for most major components with the exception of shelter. Higher prices for food (4.8%) and clothing & footwear (4.0%), were offset by lower prices for fuel oil and other fuels (-18.5%) and gasoline (-7.3%).

CPI - Food
Yellowknife, April 2015 to April 2016



Percentage Change in Prices - Food
April 2015 to April 2016



Over the last 12 months, there has been an upward trend in the price of food in Yellowknife. While every jurisdiction in Canada has experienced a price rise over this time, the increase has been more pronounced in Yellowknife and the Atlantic provinces.

Next release of CPI: June 17, 2016.

CONSUMER PRICE INDEX, APRIL 2016
SELECTED INDEXES, YELLOWKNIFE (2002 = 100)

| | 16-Apr | 16-Mar | 15-Apr | % Change from | |
|--|--------|--------|--------|---------------|--------|
| | | | | 16-Mar | 15-Apr |
| All Items | 131.9 | 131.6 | 129.8 | 0.2 | 1.6 |
| Food | 144.6 | 144.1 | 138.0 | 0.3 | 4.8 |
| Food from Stores | 144.8 | 144.3 | 137.6 | 0.3 | 5.2 |
| Food from Restaurants | 142.0 | 141.8 | 137.7 | 0.1 | 3.1 |
| Shelter | 149.1 | 148.8 | 149.9 | 0.2 | -0.5 |
| Water, Fuel & Electricity | 177.1 | 175.7 | 189.0 | 0.8 | -6.3 |
| Household Operations & Furnishings | 115.1 | 115.0 | 114.1 | 0.1 | 0.9 |
| Household Operations | 123.3 | 123.3 | 121.7 | - | 1.3 |
| Household Furnishings | 97.9 | 97.6 | 97.8 | 0.3 | 0.1 |
| Clothing & Footwear | 103.3 | 103.2 | 99.3 | 0.1 | 4.0 |
| Clothing | 98.2 | 95.9 | 94.0 | 2.4 | 4.5 |
| Footwear | 93.5 | 93.9 | 92.9 | -0.4 | 0.6 |
| Clothing Accessories & Jewellery | 142.8 | 151.8 | 133.3 | -5.9 | 7.1 |
| Clothing Material, Notions & Services | 111.4 | 111.4 | 110.1 | - | 1.2 |
| Transportation | 126.2 | 124.6 | 123.3 | 1.3 | 2.4 |
| Private Transportation | 125.9 | 124.3 | 122.8 | 1.3 | 2.5 |
| Public Transportation | 130.7 | 129.2 | 128.4 | 1.2 | 1.8 |
| Health & Personal Care | 123.1 | 120.7 | 120.1 | 2.0 | 2.5 |
| Health Care | 118.7 | 115.3 | 115.5 | 2.9 | 2.8 |
| Personal Care | 127.3 | 125.6 | 124.5 | 1.4 | 2.2 |
| Recreation, Education & Reading | 103.2 | 105.0 | 101.3 | -1.7 | 1.9 |
| Recreation | 98.7 | 100.7 | 97.0 | -2.0 | 1.8 |
| Education & Reading | 129.9 | 129.8 | 126.6 | 0.1 | 2.6 |
| Alcoholic Beverages & Tobacco Products | 166.2 | 166.0 | 166.0 | 0.1 | 0.1 |
| Alcoholic Beverages | 144.9 | 144.5 | 148.5 | 0.3 | -2.4 |
| Tobacco Products & Smokers' Supplies | 193.6 | 193.8 | 186.1 | -0.1 | 4.0 |
| SPECIAL AGGREGATES: | | | | | |
| All-Items Excluding: | | | | | |
| Food | 129.6 | 129.3 | 128.3 | 0.2 | 1.0 |
| Energy | 128.9 | 128.7 | 125.8 | 0.2 | 2.5 |
| Shelter | 124.5 | 124.2 | 121.4 | 0.2 | 2.6 |
| Alcoholic Beverages | 131.6 | 131.3 | 129.4 | 0.2 | 1.7 |
| Tobacco Products | 130.8 | 130.4 | 128.7 | 0.3 | 1.6 |
| Housing (1986 Definition) | 138.5 | 138.7 | 138.8 | -0.1 | -0.2 |
| ENERGY AND ITS COMPONENTS: | | | | | |
| Energy | 158.7 | 155.9 | 171.9 | 1.8 | -7.7 |
| Electricity | 188.0 | 188.0 | 189.4 | - | -0.7 |
| Fuel Oil And Other Fuels | 177.4 | 172.5 | 217.8 | 2.8 | -18.5 |
| Natural Gas | .. | .. | .. | .. | .. |
| Gasoline | 124.0 | 120.0 | 133.7 | 3.3 | -7.3 |
| Fuel, Parts and Supplies for Rect'l Vehicles | .. | .. | .. | .. | .. |

Notes:

1. Source: Statistics Canada, CANSIM Table 326-0020
2. CPI values for Yellowknife and Whitehorse include estimates of price changes for owned accommodation based on the price of rental accommodation. As a result, the all-items indexes published for these centres are not strictly comparable to those for Canada and Edmonton.